

Projects EFP Supports Throughout the East



Northern Forest

The Northern Forest is a vast and unbroken expanse of 26 million acres stretching from New York’s Adirondacks through Vermont and New Hampshire to the Maine Woods. The Northern Forest contains the headwaters of virtually every major river in the Northeast and provides a \$15 billion annual boost to local communities from forestry to tourism.

LWCF Projects

- Acadia National Park (ME)
- Appalachian National Scenic Trail (VT)
- Green Mountain NF (VT)
- Minuteman NP (MA)
- Silvio Conte NFWR (NH, VT, MA, CT)
- Umbagog NWR (NH)

Forest Legacy Projects

- Androscoggin Headwaters North (NH)
- Brushy Mountain (MA)
- Cardigan Highlands (NH)
- Follensby Pond (NY)
- Katahdin Forest Expansion (ME)
- Northern Green Mountains Linkage (VT)
- West Grand Lake Community Forest (ME)



Highlands & Mid-Atlantic Region

The Highlands region is a 3.5 million-acre forested greenbelt stretching across PA, NJ, NY and CT. This landscape provides clean and plentiful drinking water to over 15 million Americans in cities such as Hartford, New York City, Philadelphia and hundreds of other communities. It also connects more than 25 million Americans, who live within an hour’s drive, with close-to-home recreational opportunities.

Highland Conservation Act Projects

- Hopewell Big Woods (PA)
- Naugatuck/Mad River Headwaters (CT)
- Northern Highlands (NJ)
- Sterling Forest/Thorne Valley Project (NY)



(Mid-Atlantic Region continued)

LWCF Projects

- Delaware Water Gap (PA/NJ)
- Gettysburg NP (PA)
- Great Swamp NWR (NJ)
- Monongahela NF (WV)
- Stewart B. McKinney NWR (CT)
- Wallkill NWR (NJ)

Forest Legacy Projects

- Chesapeake Headwaters (DE)
- Hurley Mountain (NY)
- Little Bushkill Headwaters Forest Reserve (PA)
- Scantic River Headwaters (CT)

Southern Appalachians, Cumberland Plateau & Southern Coastal Forests

The Southern Appalachian and the Cumberland Plateau region is America’s most biologically rich forest resource area and the source of clean drinking water for thousands of smaller communities. Southern coastal forests include endangered longleaf pine ecosystem, bottom-land hardwood forests in coastal areas like South Carolina’s ACE Basin, and the rich coastal forests of the Gulf States.

LWCF Projects

- Blue Ridge Parkway (NC/VA)
- Chattahoochee/Oconee National Forests (GA)
- Cherokee National Forest, Rocky Fork (TN)
- Congaree National Park (SC)
- Cumberland Gap NHP (KY)
- Little River Canyon National Preserve (AL)
- North Carolina National Forests, NC Threatened Treasures (NC)
- Osceola NF (FL)
- Suwannee Wildlife Corridor (FL)

Forest Legacy Projects

- Campbell Creek Watershed (NC)
- North Cumberland (TN)
- Orton Plantation (NC)
- Savannah River Phase II (SC)
- Tallapoosa River Fall Line Hills (AL)

To Learn More

- EFP Chair: **Pat Byington, The Wilderness Society** | Pat_Byington@tw.s.org | 205.999.7655
- EFP Coordinators: **Jeremy Sheaffer, The Wilderness Society (Northeast)** | Jeremy_Sheaffer@tw.s.org
- Brian Gallagher, Western Pennsylvania Conservancy (Mid-Atlantic)** | bgallagher@paconserve.org
- Mark Shelley, Southern Appalachian Forest Coalition (Southeast)** | mark@safc.org



The vast canopy of eastern forests that stretch from the cool pines of Maine to the rich hardwoods of the Deep South is a critical natural resource area in America. These forests provide a stunning backdrop to the of millions of people that live in the densely populated East. They are essential as they provide clean and plentiful drinking water, wildlife, timber and outdoor recreation that meet the needs of local populations and distant cities alike.

Eastern Forest Partnership is working to permanently protect eastern forests for present and future generations. The partnership seeks to raise awareness about eastern forests and to create the political will to protect these lands.

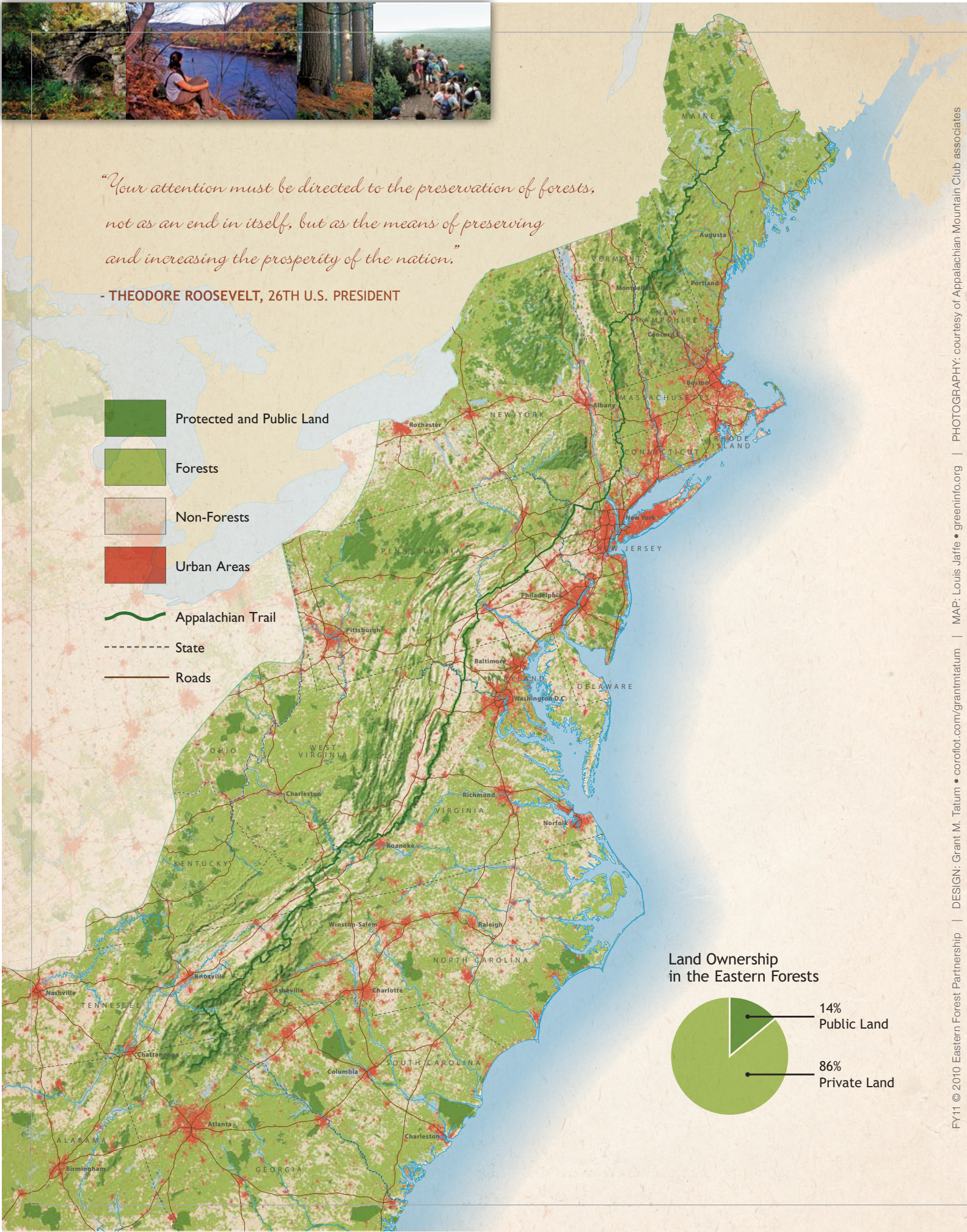
American Forests	Northern Forest Alliance	Southern Appalachian Forest Coalition
Appalachian Mountain Club	NC Coastal Land Trust	Southern Environmental Law Center
Appalachian Trail Conservancy	Pinchot Institute	Tennessee Parks & Greenway
Carolina Mountain Land Conservancy	South Carolina Coastal	Foundation
Foothills Conservancy	Conservation League	Trust for Public Land
Highlands Coalition		Western Pennsylvania Conservancy
Land Trust of Central North Carolina		The Wilderness Society



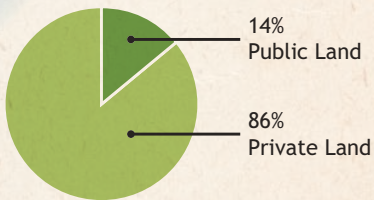
"Your attention must be directed to the preservation of forests, not as an end in itself, but as the means of preserving and increasing the prosperity of the nation."

- THEODORE ROOSEVELT, 26TH U.S. PRESIDENT

- Protected and Public Land
- Forests
- Non-Forests
- Urban Areas
- Appalachian Trail
- State
- Roads



Land Ownership in the Eastern Forests



FY11 © 2010 Eastern Forest Partnership | DESIGN: Grant M. Tatum • coroflot.com/granttatum | MAP: Louis Jaffe • greeninfo.org | PHOTOGRAPHY: courtesy of Appalachian Mountain Club associates

Economic Growth & Jobs

The Department of the Interior's 2009 Report found that annually "federal parks, refuges and monuments generate more than \$24 billion in recreation and tourism." Active outdoor recreation, including hunting, fishing, camping, paddling, skiing, mountain biking, wildlife viewing and other activities, drives a total of \$730 billion in annual economic activity, supporting 6.5 million jobs (1 of every 20 jobs in the U.S.), and stimulating 8 percent of all consumer spending, according to the Outdoor Industry Association.

Clean Water

According to the U.S. Forest Service "the majority of the U.S. drinking water supplies originate on forested land." As such conservation of forests is essential to maintain clean and plentiful drinking water for all citizens. Studies have also found that protection of water supplies is the most cost efficient way to ensure clean and plentiful drinking water supplies to communities. The value of water flowing through our national forests alone is worth \$4.3 billion annually. Numerous polls show that clean water is a top conservation concern for 89 percent of Americans.

Better Public Health

During the past 20 years there has been a dramatic increase in obesity in the United States. In 2008, every state in the country had a prevalence of obesity 20 percent or more, with the exception of Colorado, according to the CDC. Eastern forests provide some of the best places for Americans to get exercise and to improve their physical and mental well being. Access to natural areas reduces stress, mitigates obesity and other health issues, connects families and communities, and enhances the quality for the life of all Americans.

Recreation

Eastern forests provide abundant recreational opportunities right out America's back door, including the Appalachian Trail, world-class whitewater rafting and hunting, fishing and wildlife watching close to home.

Development Threatens Eastern Forests

The U.S. Forest Service in its ground-breaking *Forests on the Edge* report in 2005 predicted unprecedented new threats to eastern forests from forest subdivision and development through 2030. The report locates the top fifteen watersheds in the nation for projected future development in the East and anticipates that 44 million acres of private forest nationwide will be lost to development through 2030.



Eastern Forest Partnership Priorities for FY11

\$600 million (\$425M federal; \$175M state) in funding for the Land & Water Conservation Fund

\$150 million in funding for the Forest Legacy Program

\$10 million in funding for the Community Forest & Open Space Conservation program

\$11 million in funding for the Highlands Conservation Act

Support passage of S. 2747, the Land & Water Conservation Authorization & Funding Act of 2009 (LWCF)

Support passage of comprehensive climate legislation with dedicated revenues for natural resources, conservation and adaptation

Significant public & private investments in forest conservation is imperative to limit and offset impacts from new development on our most critical forest resource areas.



S. 2747

The Land and Water Conservation Authorization & Funding Act of 2009

Support passage of S. 2747, a bill from Senators Bingaman and Baucus (with at least nine additional co-sponsors) that will provide full and dedicated funding for LWCF at \$900 million annually. Making this critical investment will provide recreational opportunities and open space for millions of Americans, and the consistent stream of funding the bill provides will allow land management agencies to plan projects and work collectively to protect our most critical lands, waters, wildlife habitat and cultural heritage.

